



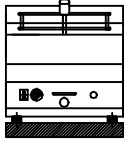
S.VENDEMIANO (TV)

SCHEMA DI INSTALLAZIONE
SCHEMA D'INSTALLATION
INSTALLATIONSPLAN
INSTALLATION DIAGRAM

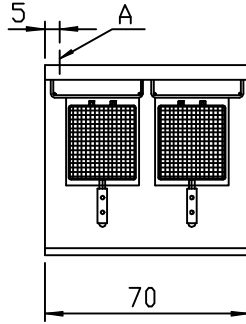
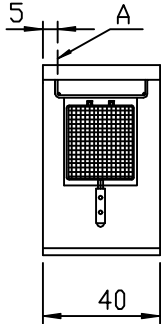
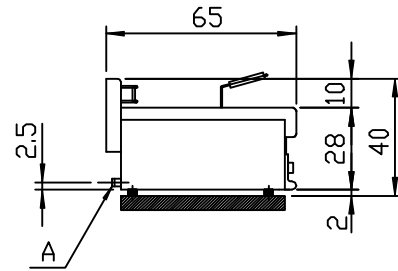
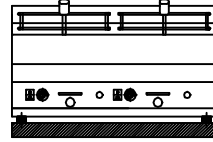
MOD. 65/40 FRG
65/70 FRG
FRG/40A
FRG/70A

CODICE
255.263.00
DATA 24-05-1999

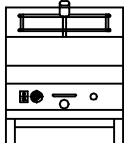
Mod 65/40 FRG
kW 6,3



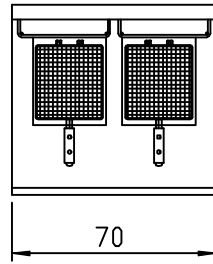
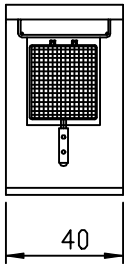
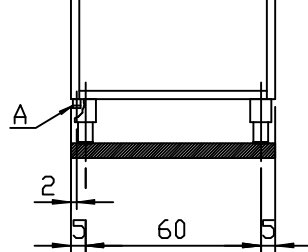
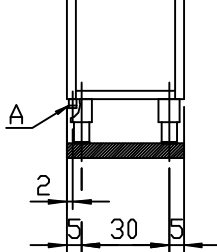
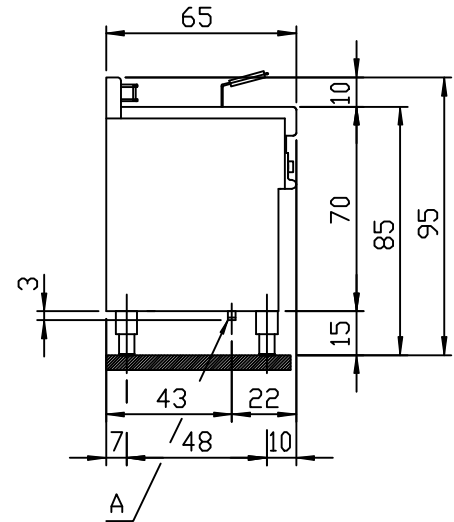
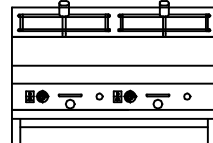
Mod 65/70 FRG
kW 12,6



Mod FRG/40A
kW 6,3



Mod FRG/70A
kW 12,6



BRUCIATORI
BRULEURS
BRENNER
BURNERS } 3,15 kW

A= Attacco gas 1/2 "G conica
Arrivee gaz 1/2 "G
Gasanschluss 1/2 "G DIN 2999
Gas inlet 1/2 "G
Pour France Denmark
Arrivee gaz 1/2 "G ISO 228-1 } ISO 7-1

Tipo di apparecchi A :

I suddetti prodotti sono stati approvati per

AT I ₂ H3B/P	BE I ₂ E+3+	DE I ₂ ELL3B/P
DK I ₂ H3B/P	ES I ₂ H3+	FI I ₂ H3B/P
FR I ₂ E+3+	GB I ₂ H3+	GR I ₃ +
IE I ₂ H3+	IT I ₂ H3+	LU I ₂ E3B/P
NL I ₂ L3B/P	NO I ₃ B/P	PT I ₂ H3+
SE I ₂ H3B/P	CH I ₂ H3B/P	
	CH I ₂ H3+	

SOSTITUISCE PARI NUMERO DEL